

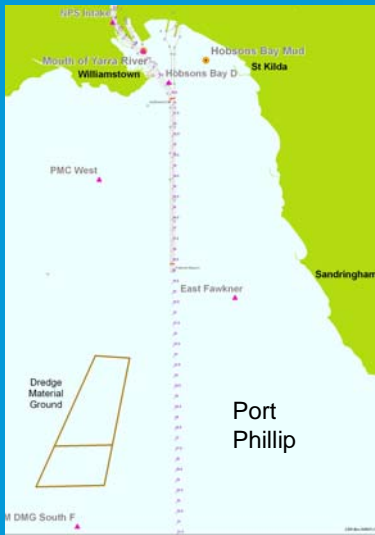
Turbidity Monitoring Locations South of the Bay – All Sites



Southern Port Phillip Turbidity Conformance Seagrass, Benthic Invertebrates, Seabirds

Turbidity
Monitoring
Concluded

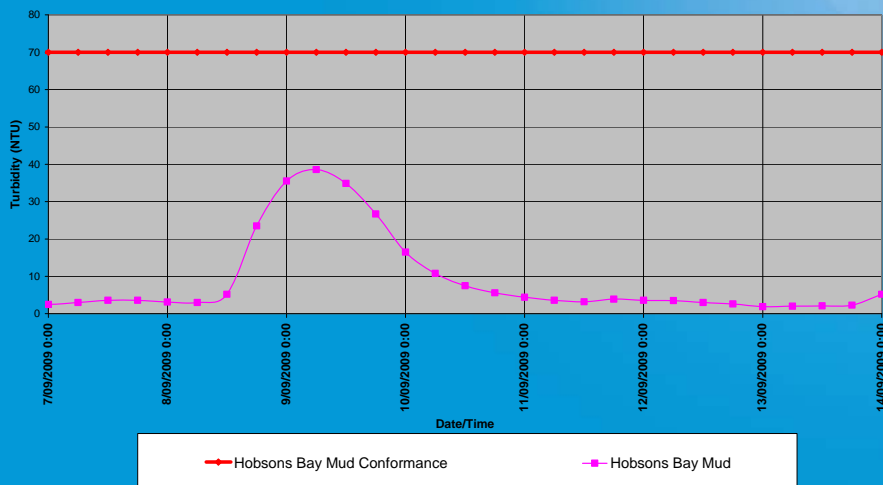
Turbidity Monitoring Locations North of the Bay – All Sites



- Conformance Sites are available weekly
- Support Sites are available monthly



Northern Port Phillip Fish - Turbidity Conformance by 6hEWMA



Interpretation of weekly turbidity monitoring results, released 16 September 09

- Turbidity levels remained below environmental limits.
- Two Response Level 1 exceedances at Hobsons Bay Mud on 9 September due to elevated metocean conditions
- In accordance with necessary procedure, EMP controls did not apply as turbidity at the site returned to normal levels representative of background conditions.

