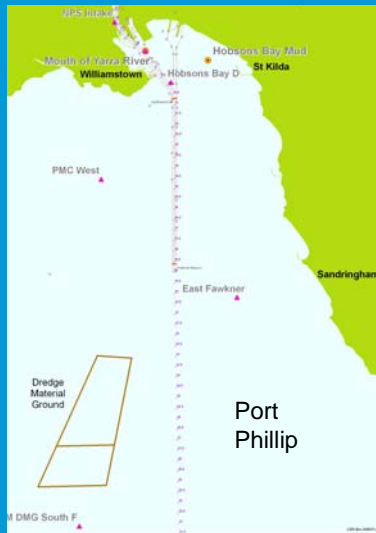


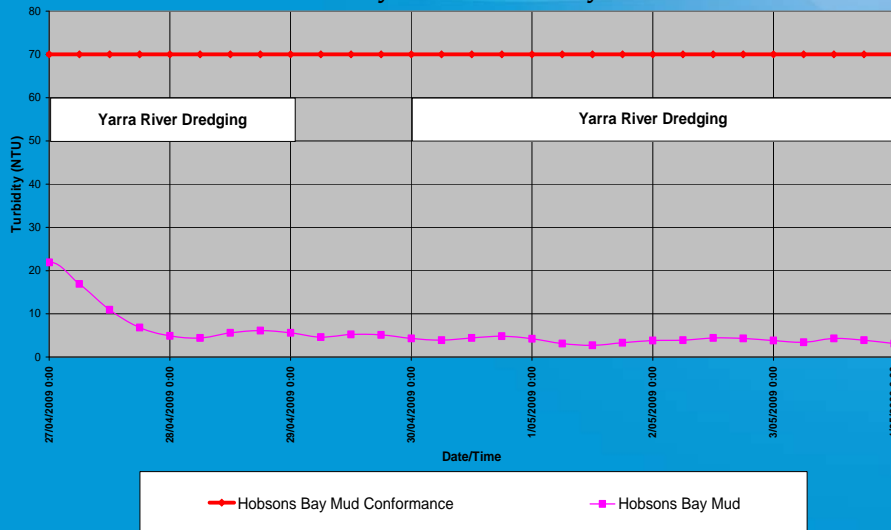
Turbidity Monitoring Locations North of the Bay – All Sites

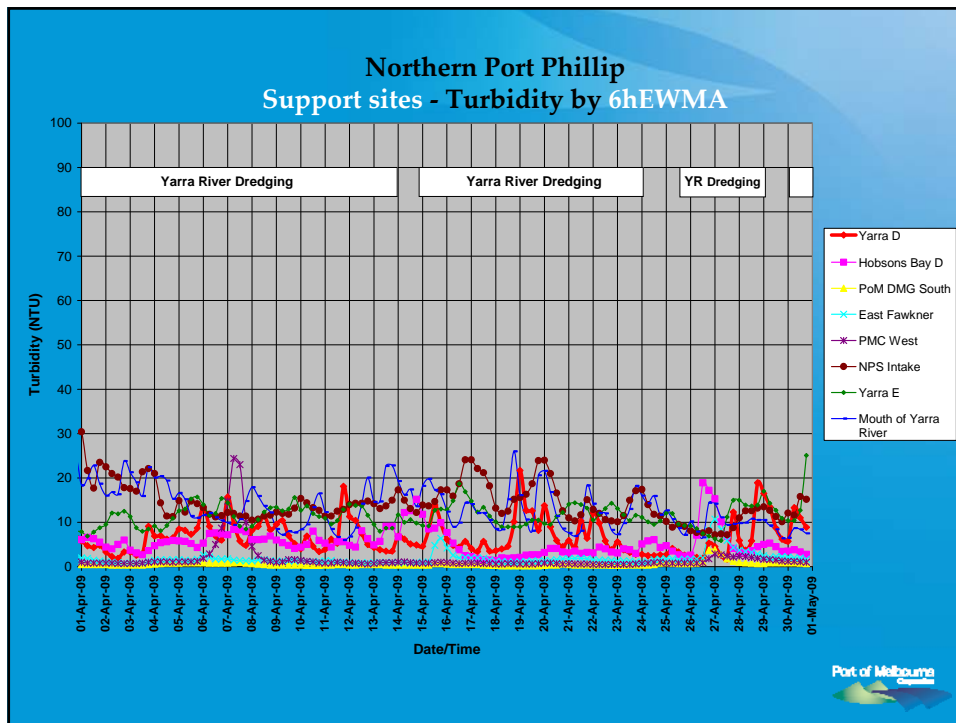


- Conformance Sites are available weekly
- Support Sites are available monthly



Northern Port Phillip Fish - Turbidity Conformance by 6hEWMA





Interpretation of weekly turbidity monitoring results, released 6 May 2009

- The report shows low turbidity across all conformance monitoring sites with the exception of South of SE DMG, in light of storm conditions and strong winds (as reported last week). Dredging had been suspended for a period. An exceedance of the environmental limit was recorded at South of SE DMG. Conditions eased and turbidity levels rapidly returned to normal. Dredging recommenced during this time.
- This week - as is normal practice - we release data from our *support* sites. A peak was recorded at site Mornington during the same period of storm conditions and strong winds and turbidity levels rapidly returned to normal.