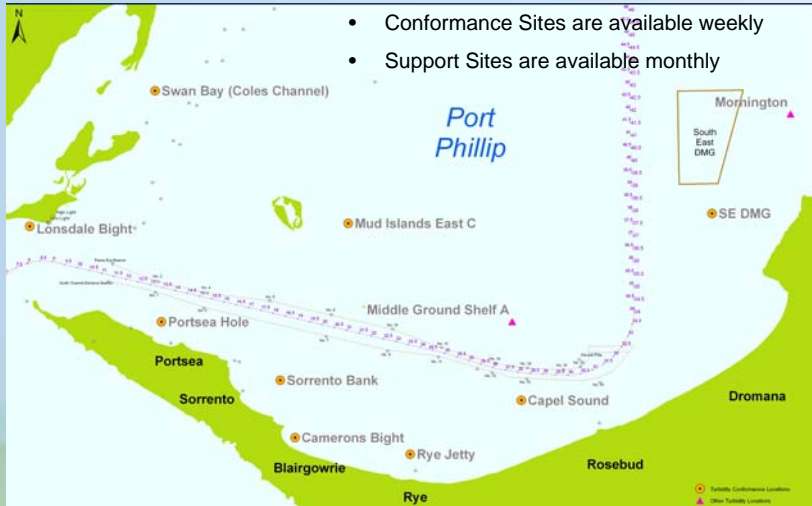
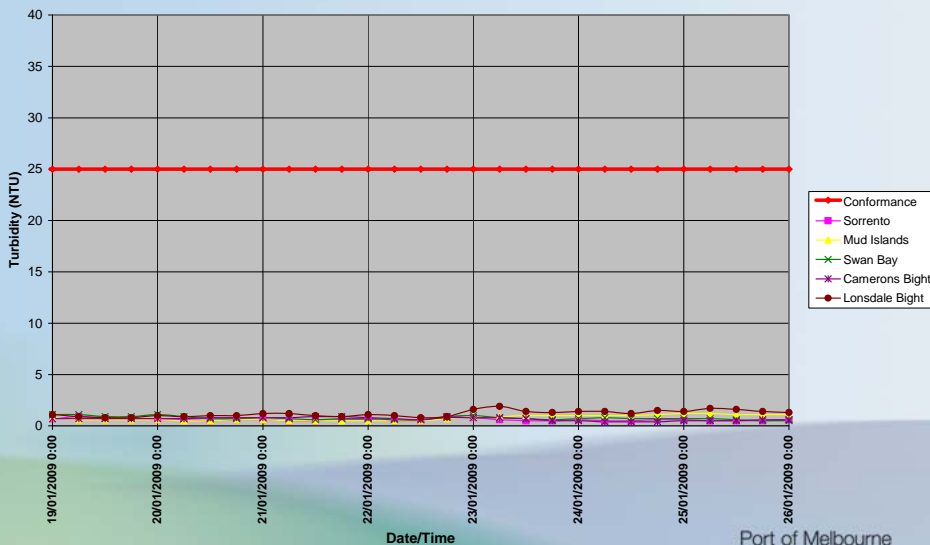


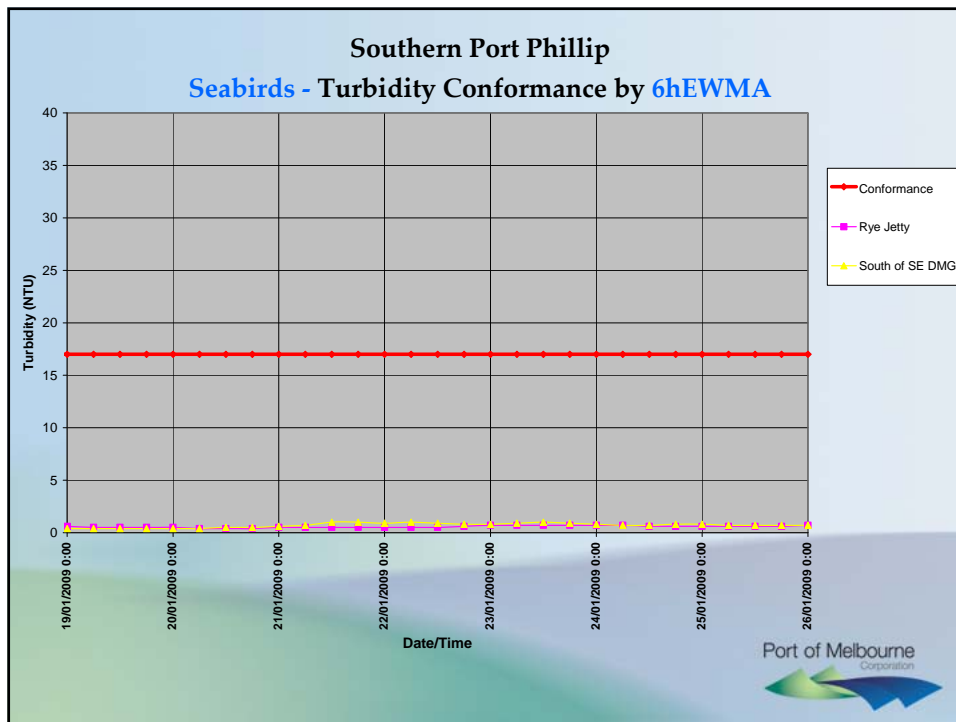
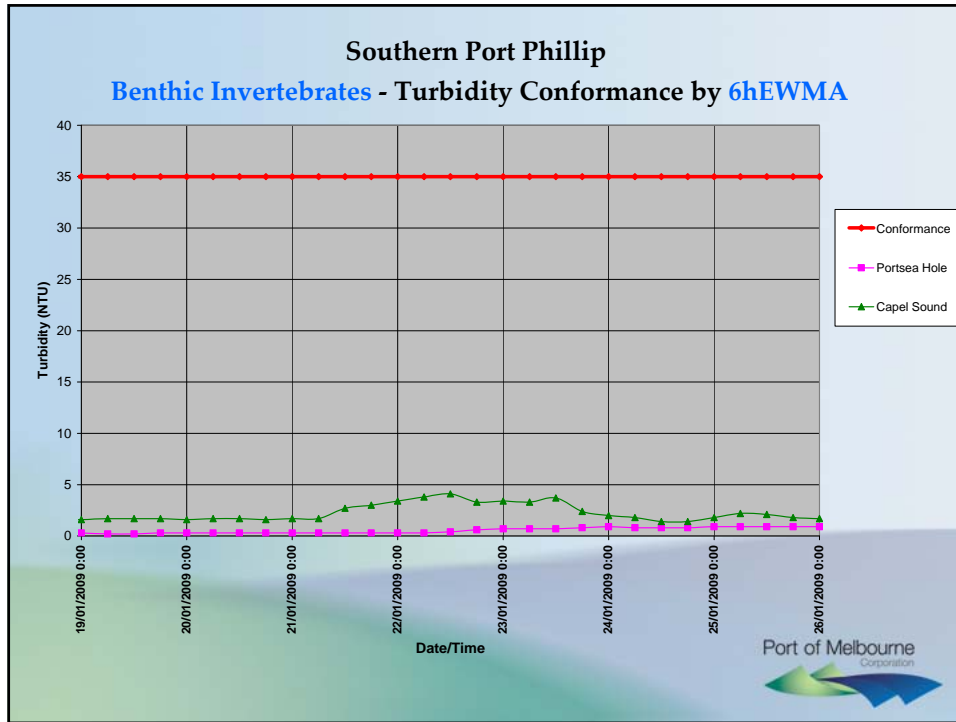
## Turbidity Monitoring Locations South of the Bay – All Sites

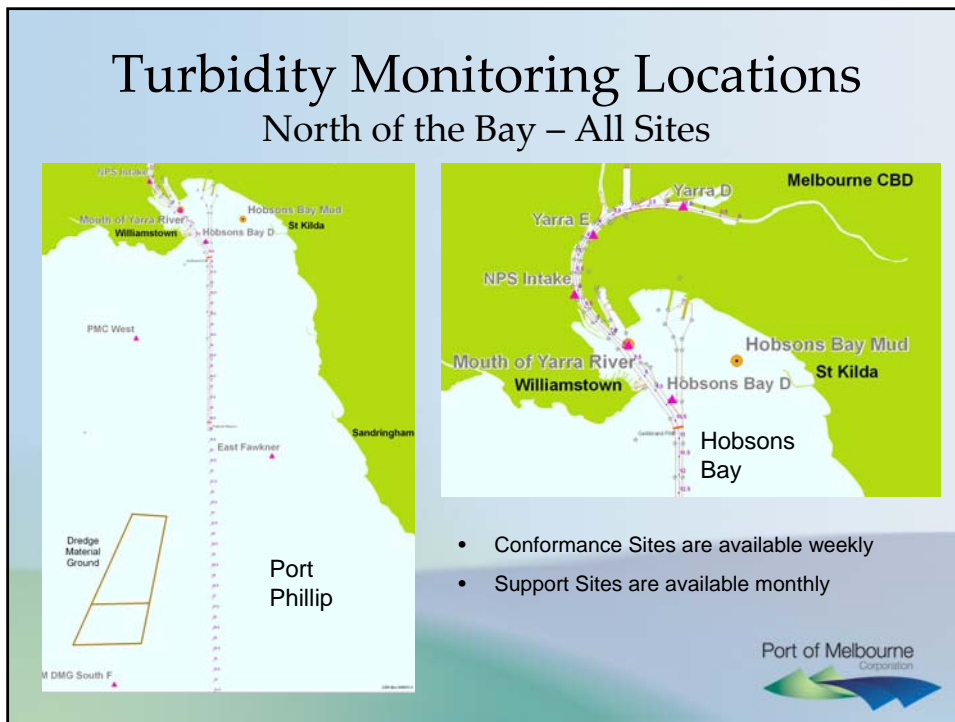
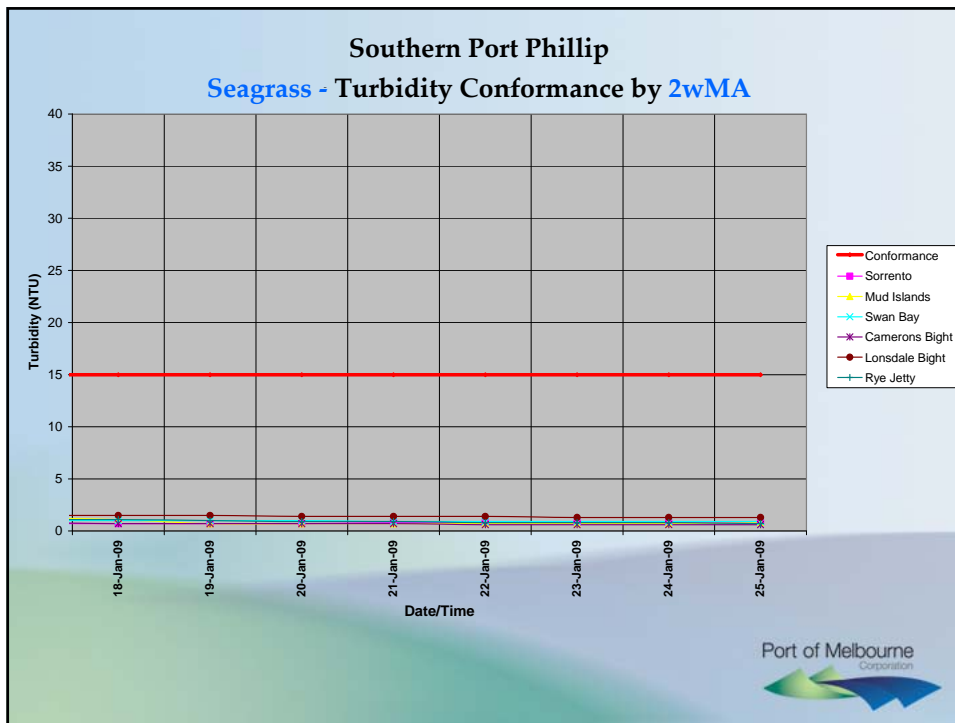


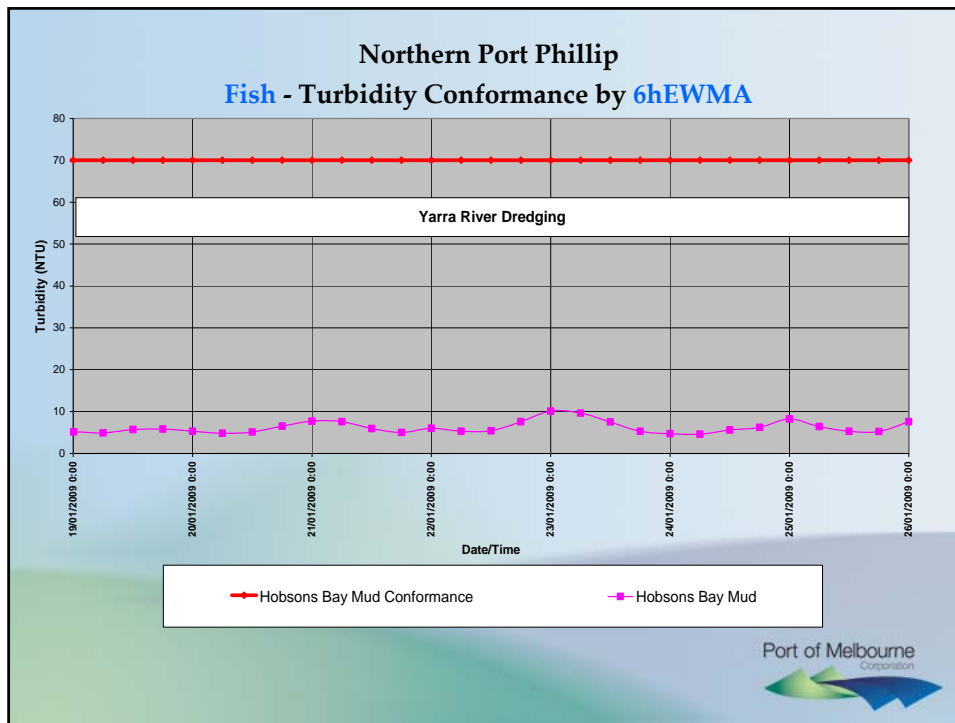
- Conformance Sites are available weekly
- Support Sites are available monthly

### Southern Port Phillip Seagrass - Turbidity Conformance by 6hEWMA









## Interpretation of Weekly Turbidity Monitoring results, released 28 January 2009

- The data shows that all monitoring results were below the environmental limits and response levels
- The report this week shows low turbidity across all monitoring sites