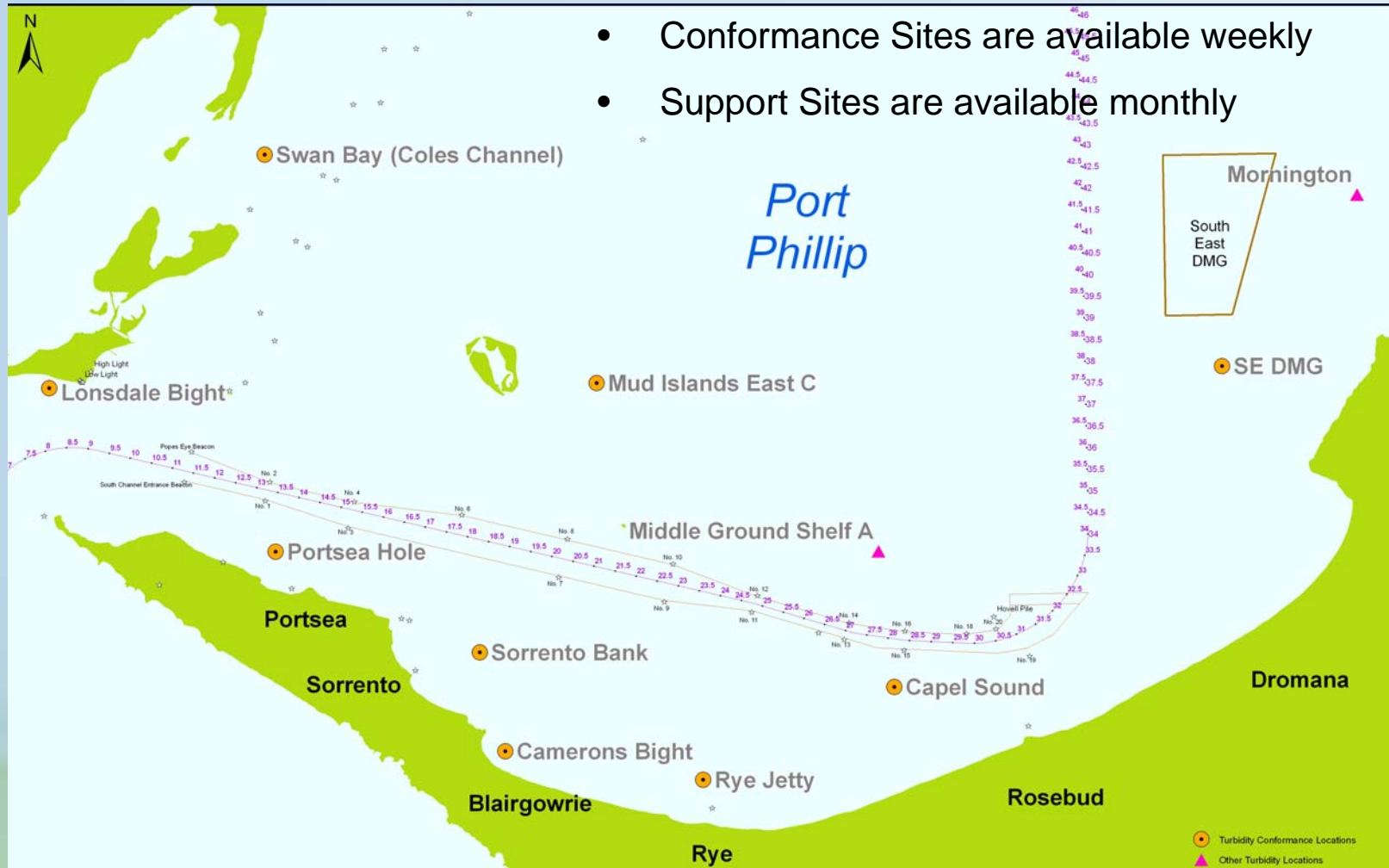


Turbidity Monitoring Locations

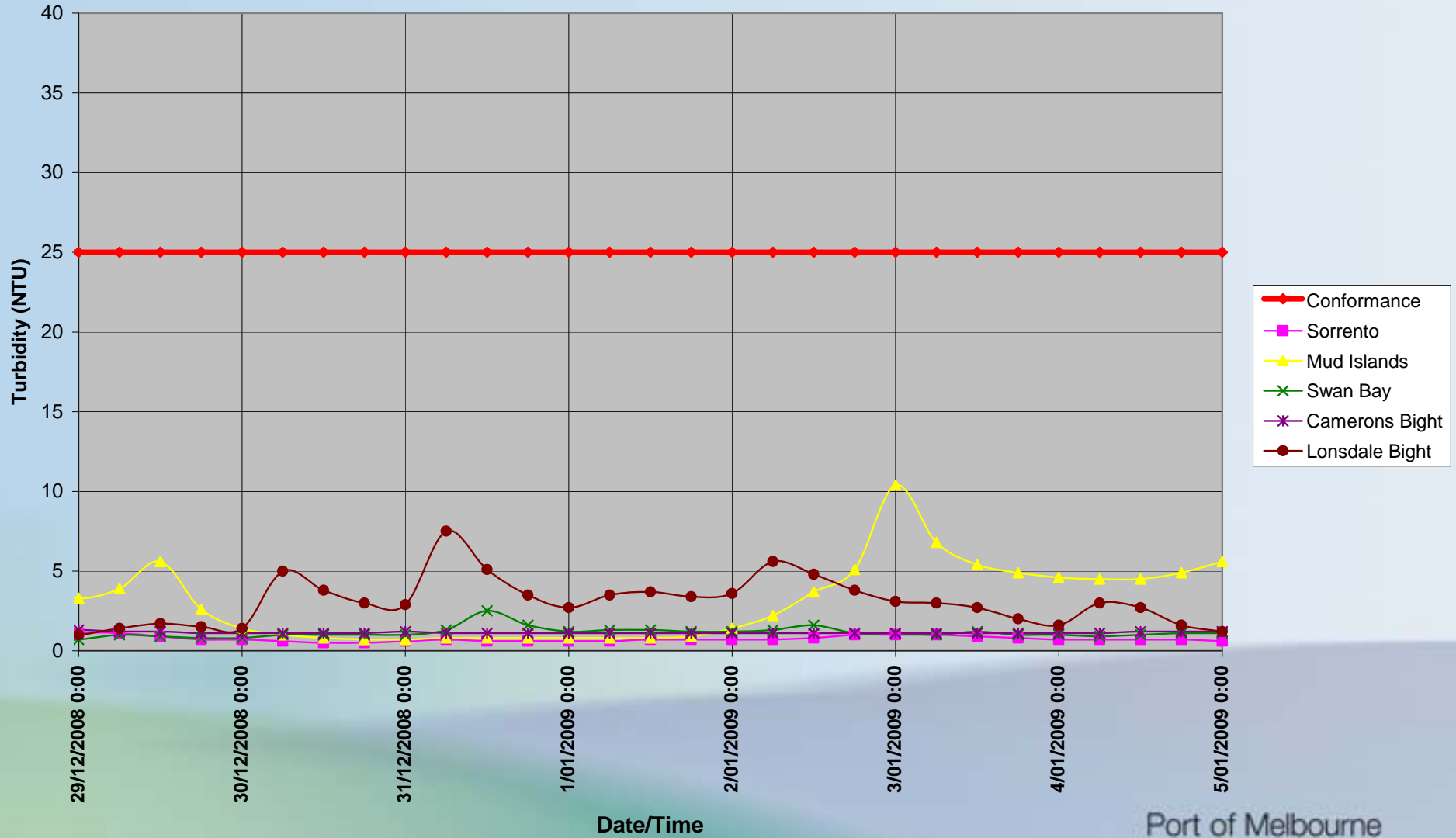
South of the Bay – All Sites

- Conformance Sites are available weekly
- Support Sites are available monthly



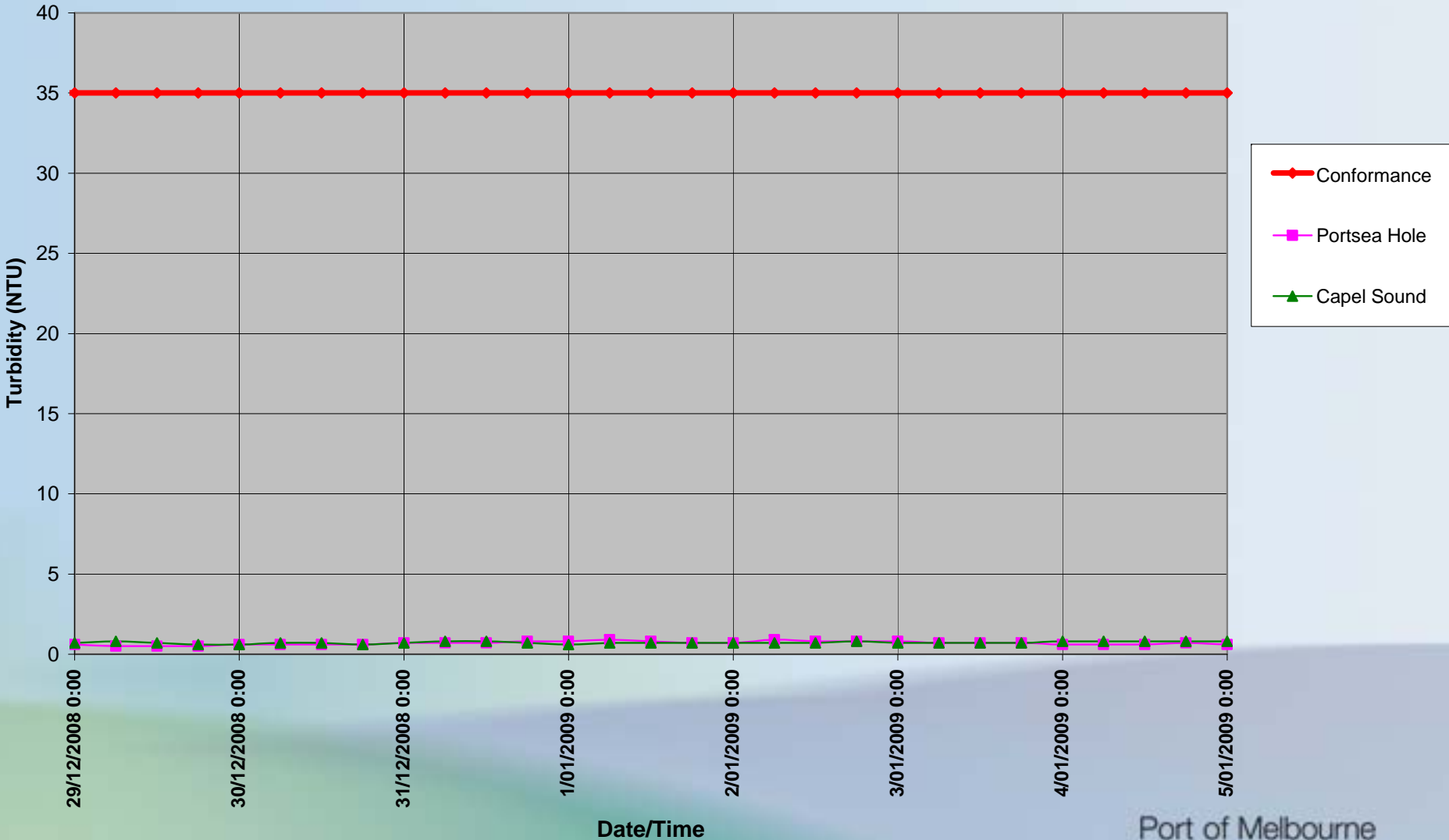
Southern Port Phillip

Seagrass - Turbidity Conformance by 6hEWMA



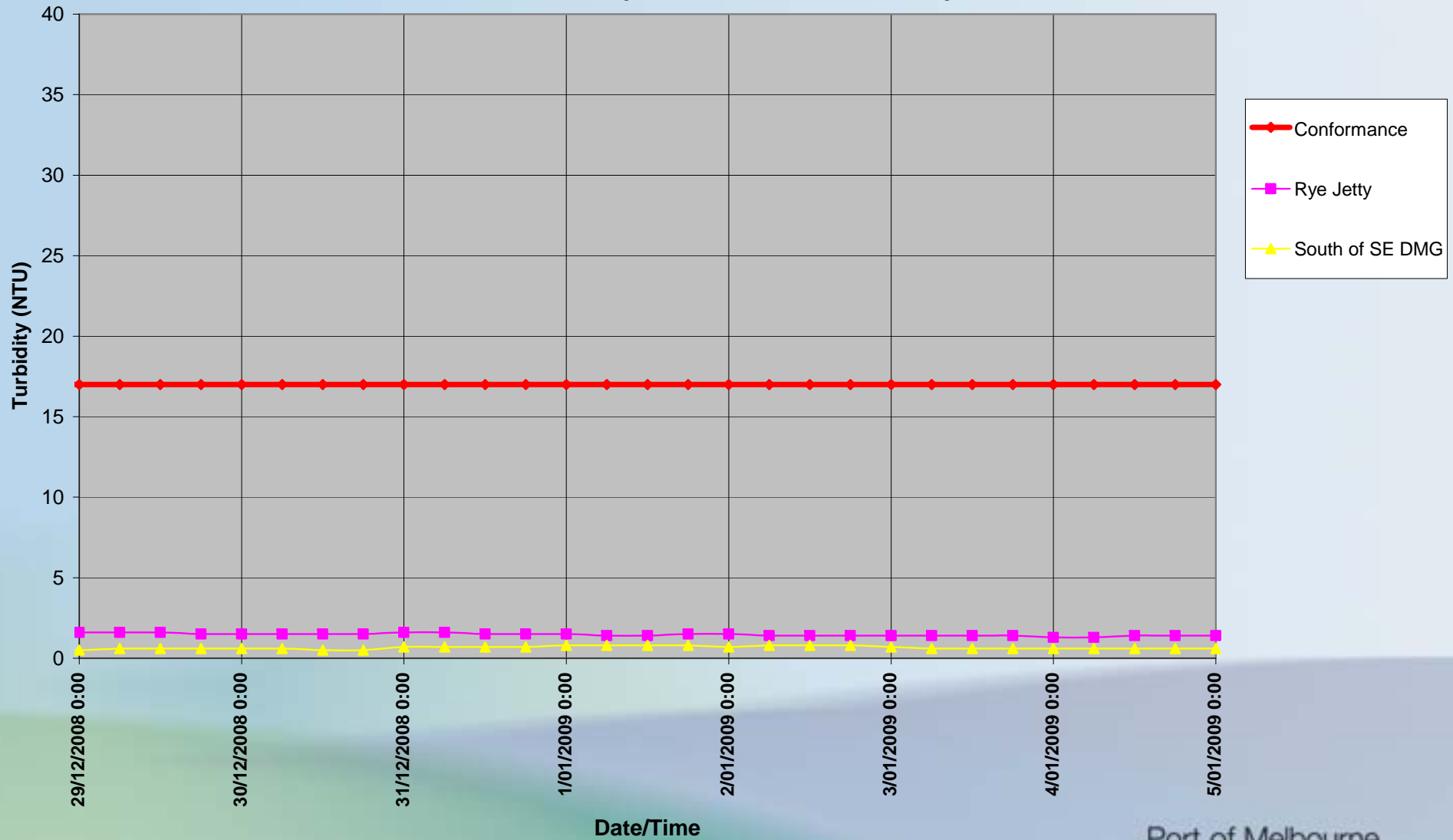
Southern Port Phillip

Benthic Invertebrates - Turbidity Conformance by 6hEWMA



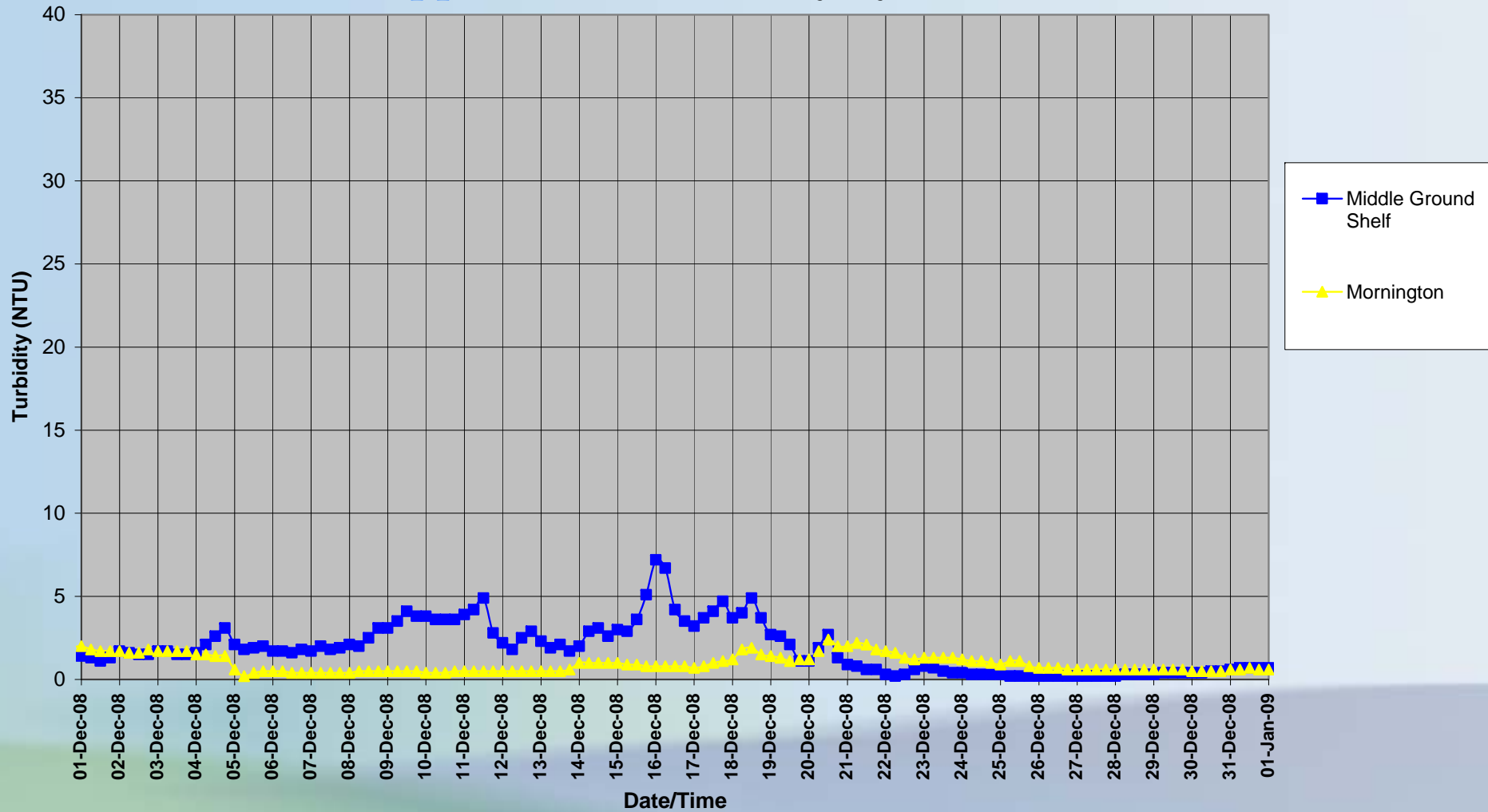
Southern Port Phillip

Seabirds - Turbidity Conformance by 6hEWMA



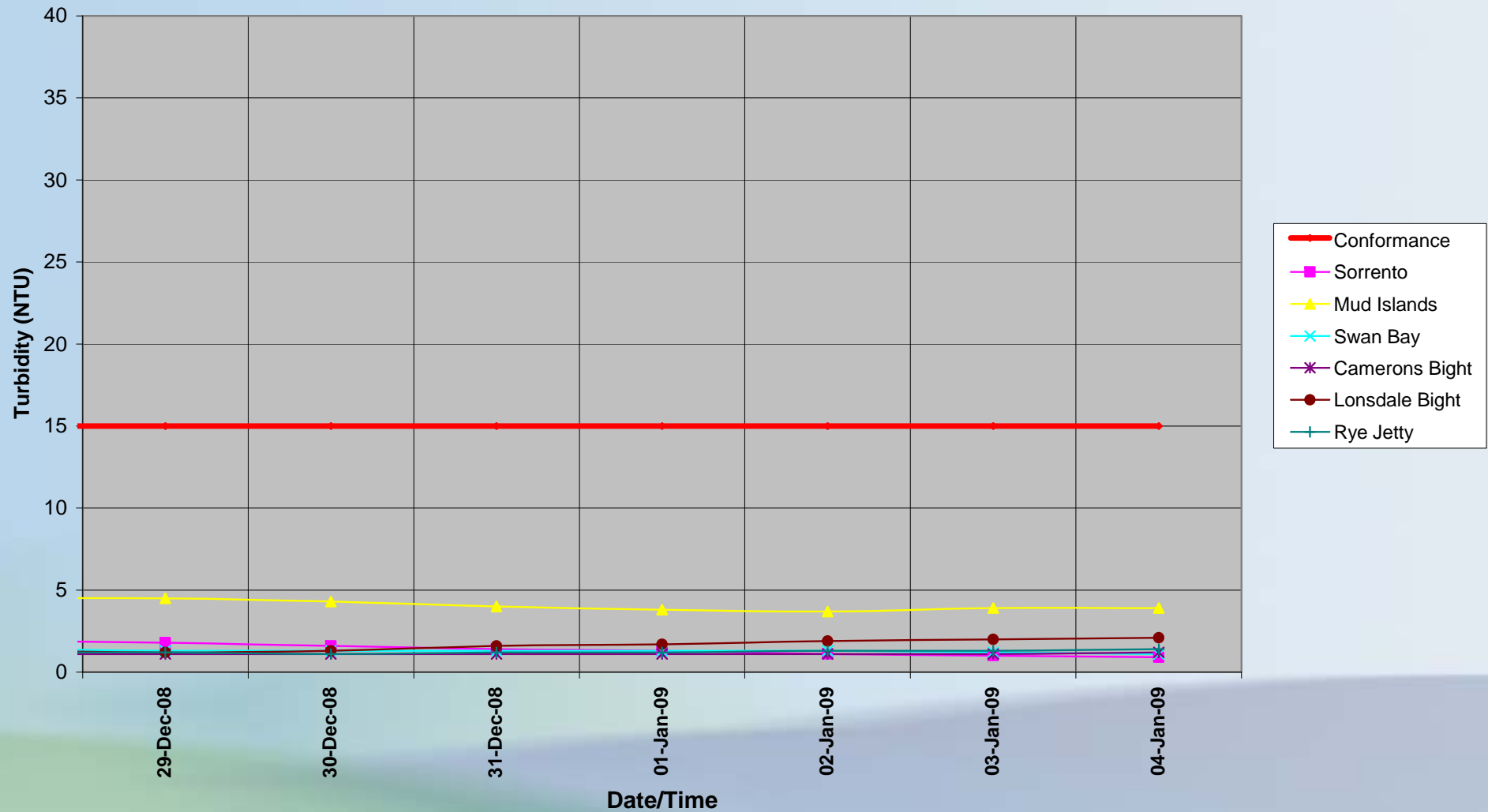
Southern Port Phillip

Support sites - Turbidity by 6hEWMA



Southern Port Phillip

Seagrass - Turbidity Conformance by 2wMA



Turbidity Monitoring Locations

North of the Bay – All Sites



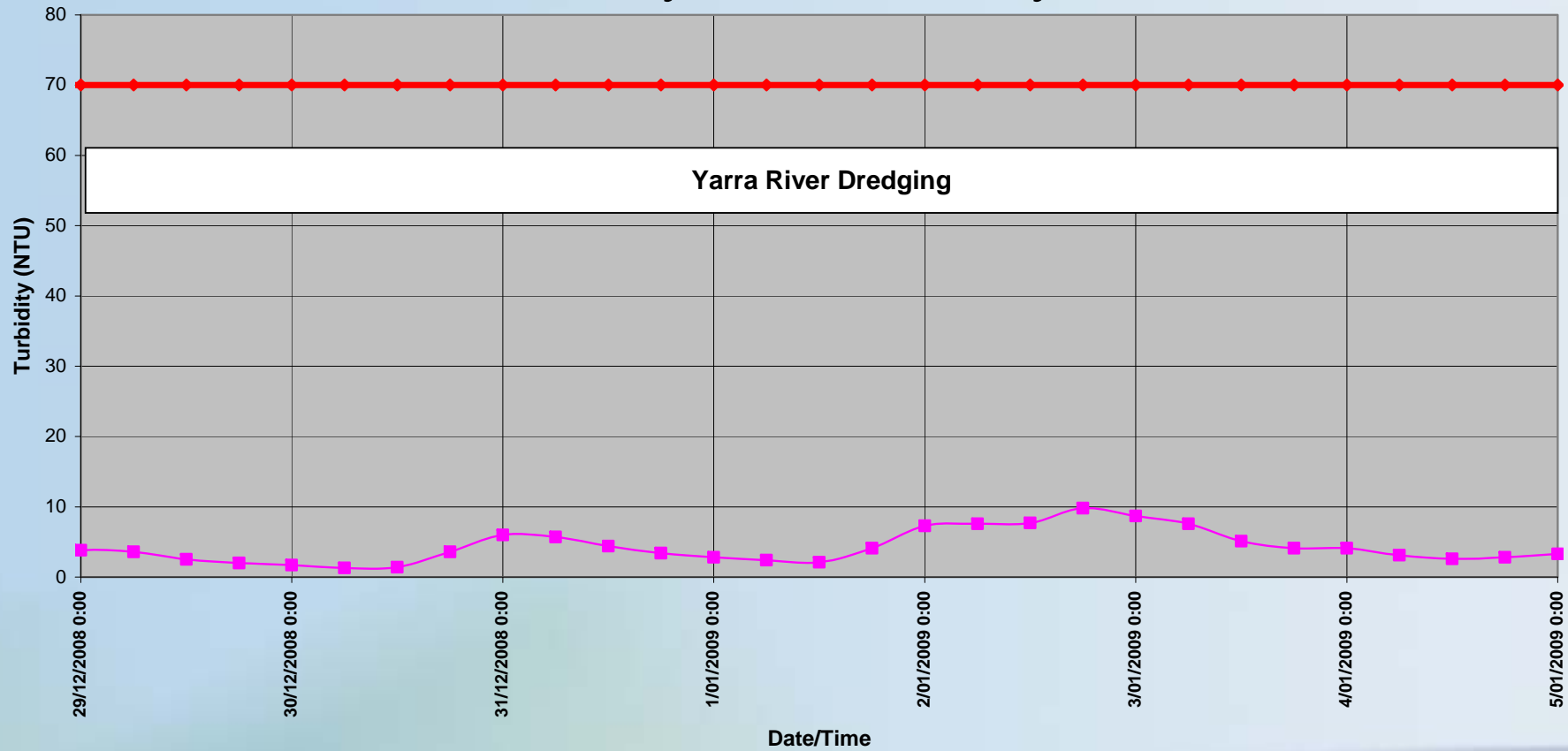
- Conformance Sites are available weekly
- Support Sites are available monthly

Port of Melbourne
Corporation



Northern Port Phillip

Fish - Turbidity Conformance by 6hEWMA



—◆— Hobsons Bay Mud Conformance

—■— Hobsons Bay Mud



Northern Port Phillip

Support sites - Turbidity by 6hEWMA

