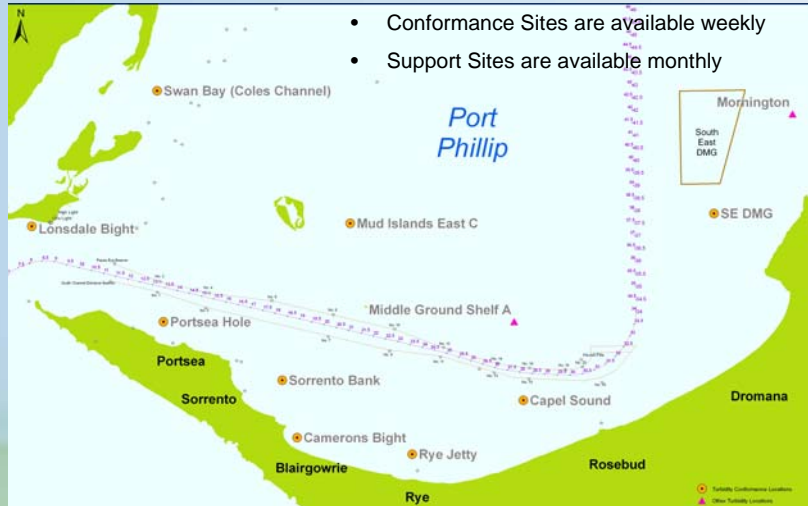


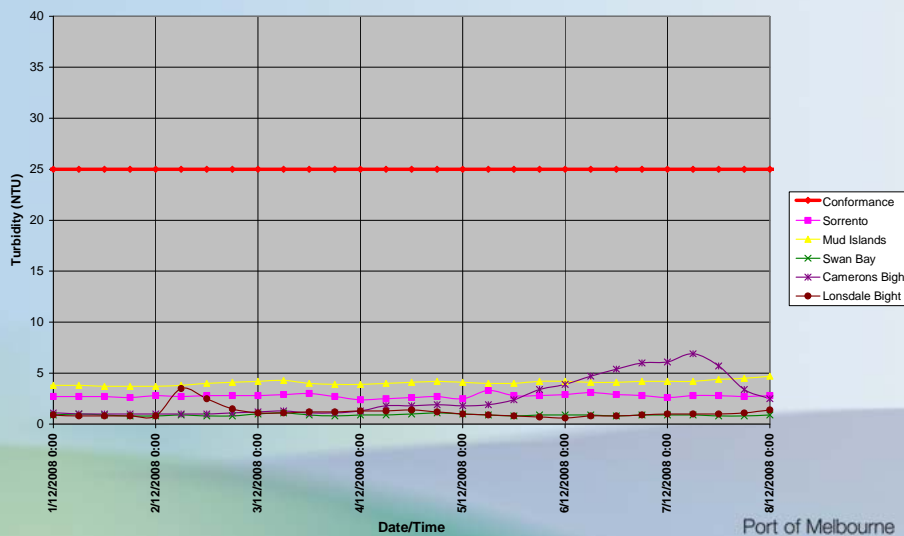
Turbidity Monitoring Locations South of the Bay – All Sites

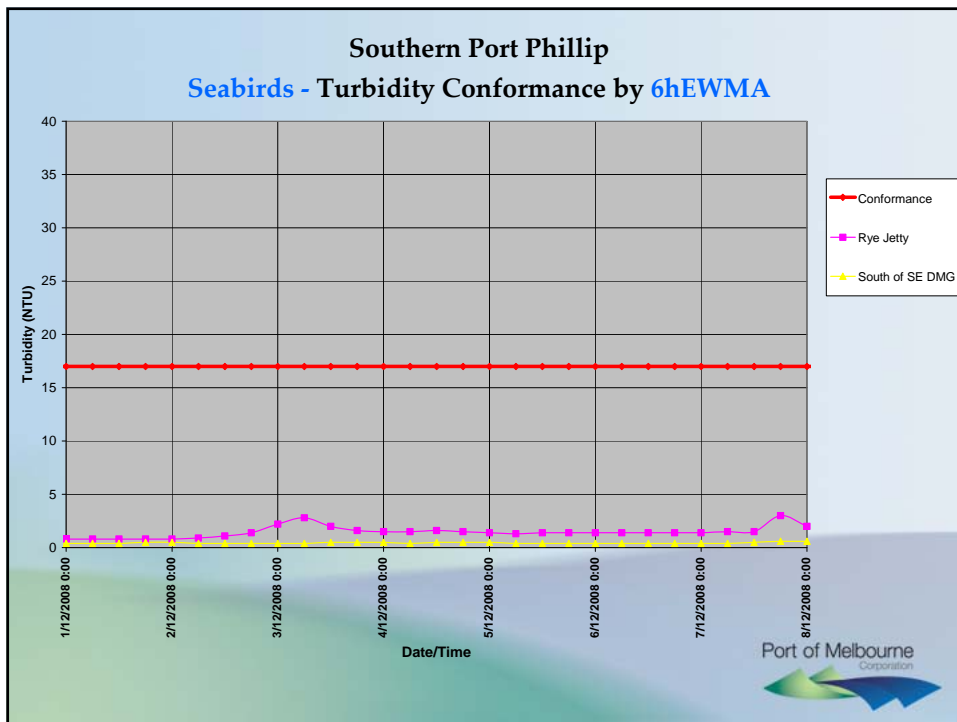
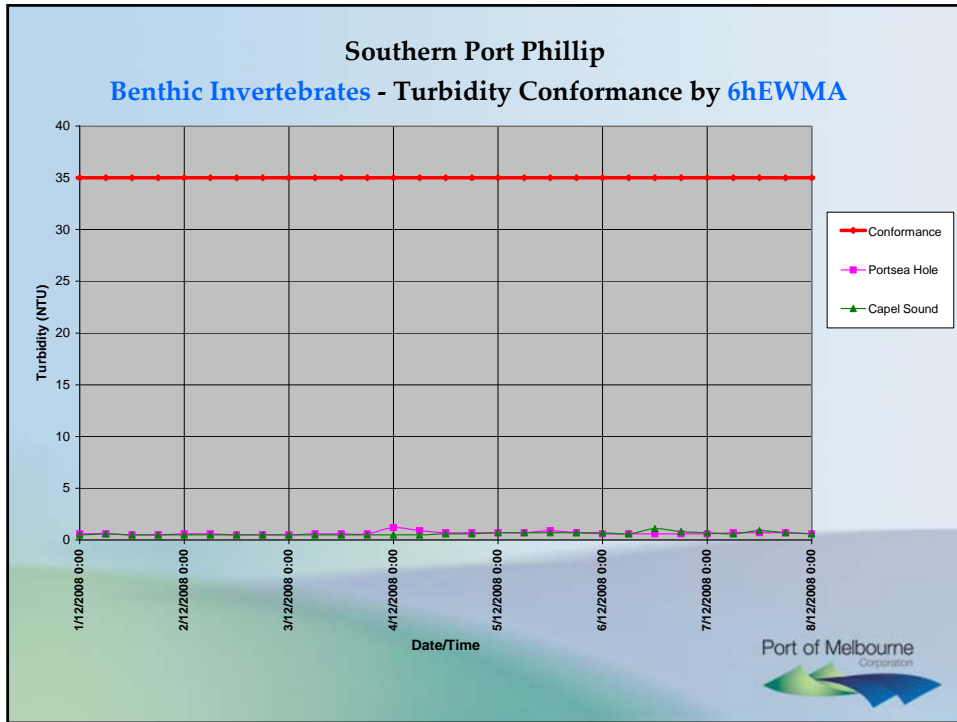


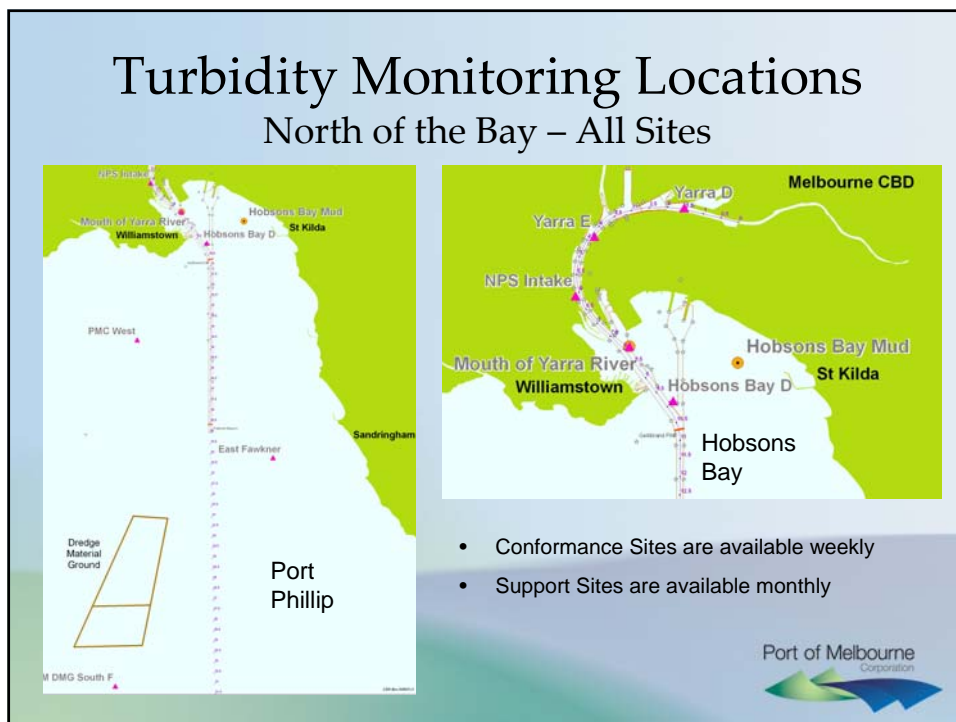
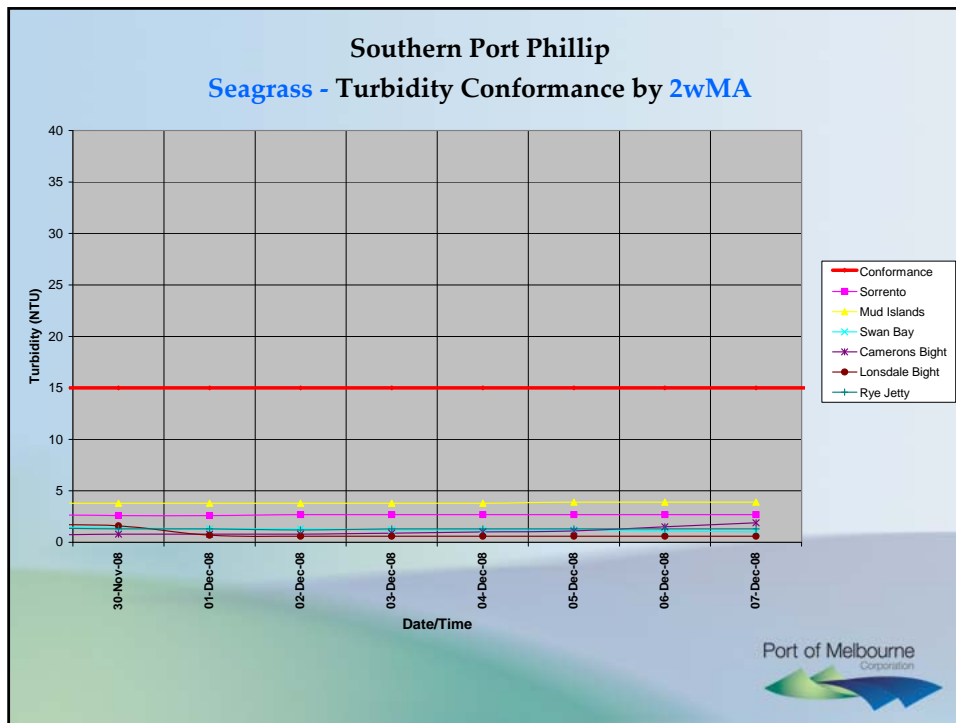
- Conformance Sites are available weekly
- Support Sites are available monthly

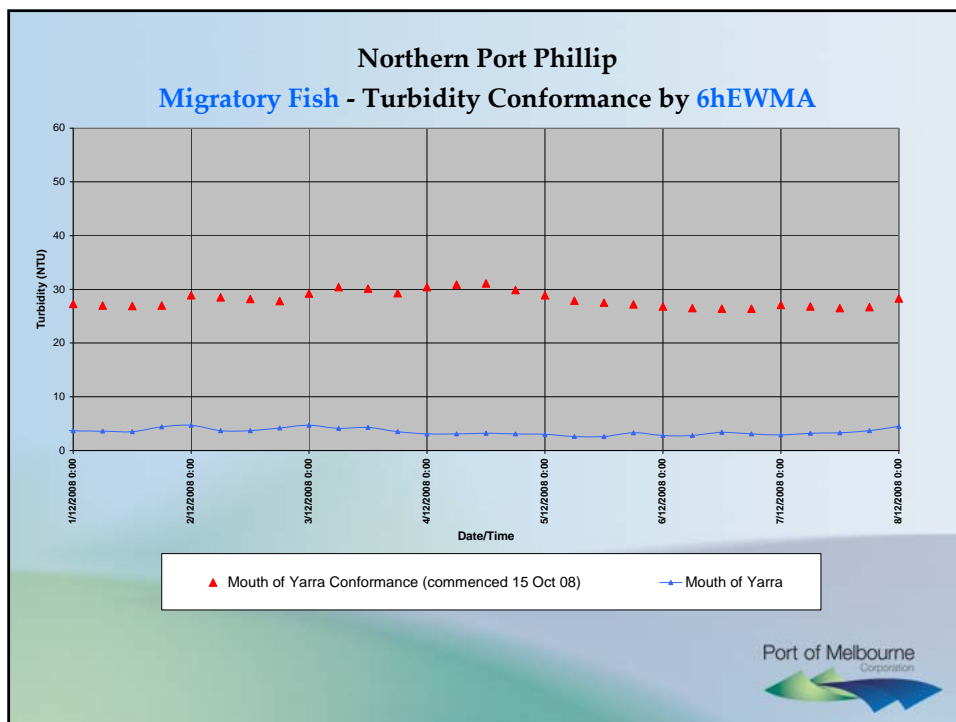
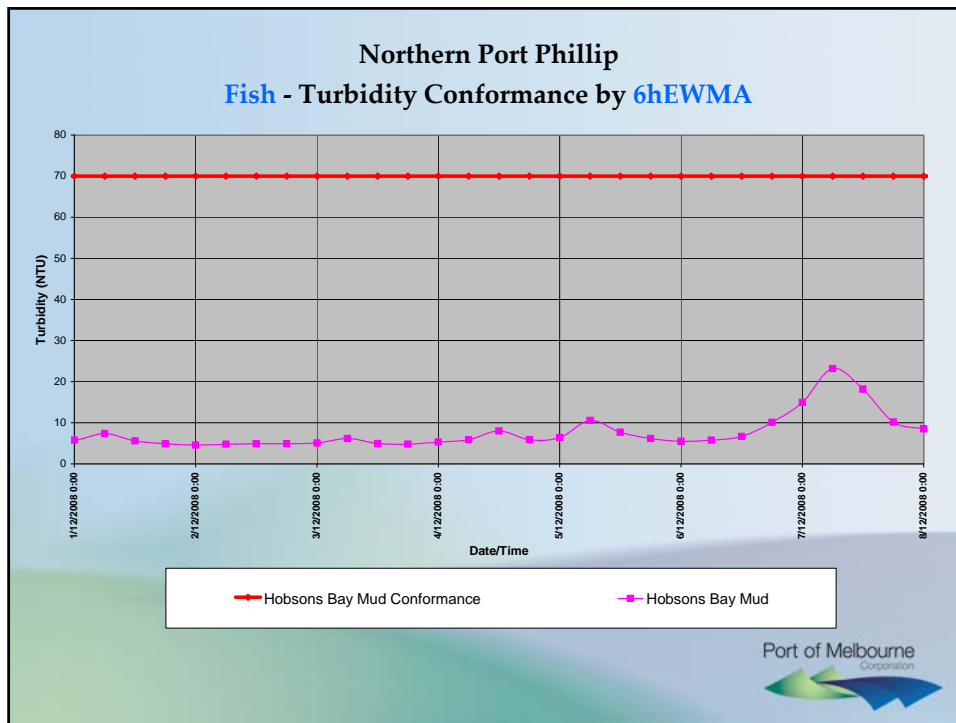


Southern Port Phillip Seagrass - Turbidity Conformance by 6hEWMA









Interpretation of weekly turbidity monitoring results, released 10 December 08

- The data shows all environmental limits are being complied with in the bay
- Noticeable rise at Hobsons Bay Mud on 7 December due to the sensors of the monitoring buoy being partially fouled. They were subsequently cleaned and the level rapidly returned to normal.

