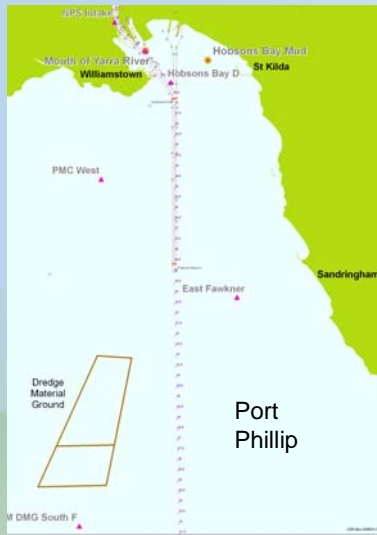


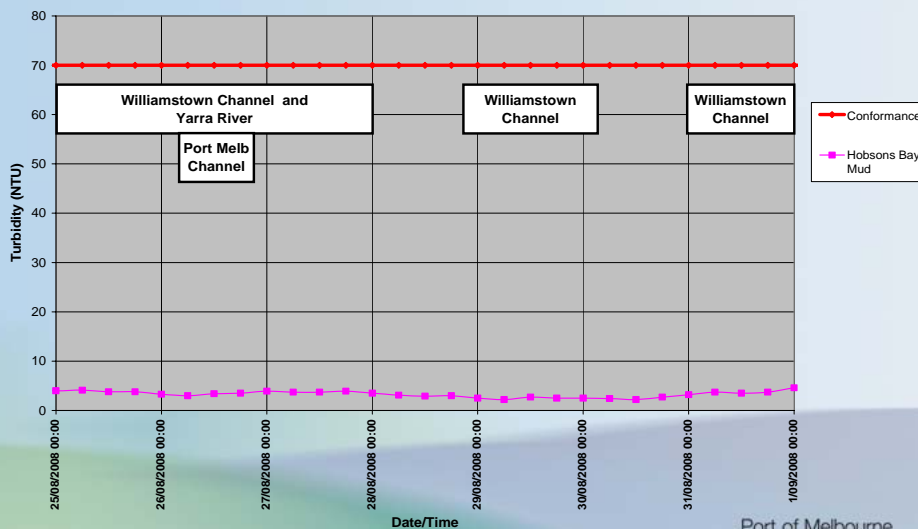
Turbidity Monitoring Locations North of the Bay – All Sites

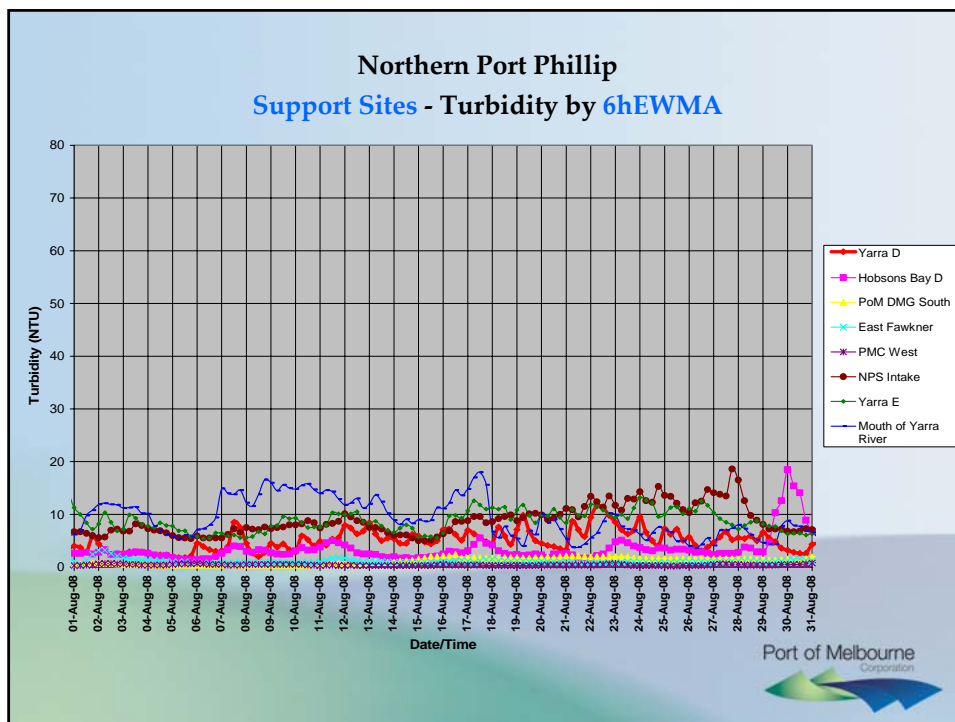


- Conformance Sites are available weekly
- Support Sites are available monthly



Northern Port Phillip Fish - Turbidity Conformance by 6hEWMA





Interpretation of weekly turbidity monitoring results , released 3 September 08

- Data shows all environmental limits are being complied with in the bay
- There was an elevated turbidity level at Swan Bay on 31 August due to prevailing weather conditions.
- In Southern Port Phillip there was a drop in turbidity level around 21 August due to a routine maintenance change-over of buoys. Both buoys have been correctly calibrated. The new buoy is reading lower but from all accounts to date is functioning correctly.
- In Northern Port Phillip the variations are due to prevailing weather & bay conditions.